

418

FLANGIA FILETTATA

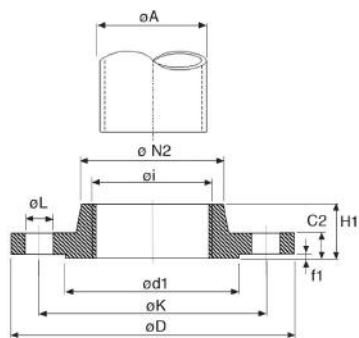
- THREADED FLANGES
- GEWINDEFLANSCH
- BRIDE FILETÉ
- BRIDA ROSCADA

MATERIAL: P250GH / C22.8

NORM: EN 1092-1-13 tipo/type "B1"

PN6

| CODE | Pipe | | Flange | | | | | | | | | Bolts | | kg | kg |
|-----------|------|-------|---------------|------|-------|-------|-------|-------|------|-------|------|-------|------|------|----|
| | DN | A mm | Thr. ϕ i | D mm | C2 mm | H1 mm | N2 mm | d1 mm | K mm | f1 mm | L mm | N° | Thr. | | |
| 418015006 | 15 | 21,3 | Rp 1/2" | 80 | 12 | 20 | 30 | 40 | 55 | 2 | 11 | 4 | M10 | 0,43 | 1 |
| 418020006 | 20 | 26,9 | Rp 3/4" | 90 | 14 | 24 | 40 | 50 | 65 | 2 | 11 | 4 | M10 | 0,66 | 1 |
| 418025006 | 25 | 33,7 | Rp 1" | 100 | 14 | 24 | 50 | 60 | 75 | 2 | 11 | 4 | M10 | 0,82 | 1 |
| 418032006 | 32 | 42,4 | Rp 1 1/4" | 120 | 14 | 26 | 60 | 70 | 90 | 2 | 14 | 4 | M12 | 1,17 | 1 |
| 418040006 | 40 | 48,3 | Rp 1 1/2" | 130 | 14 | 26 | 70 | 80 | 100 | 3 | 14 | 4 | M12 | 1,4 | 1 |
| 418050006 | 50 | 60,3 | Rp 2" | 140 | 14 | 28 | 80 | 90 | 110 | 3 | 14 | 4 | M12 | 1,59 | 1 |
| 418065006 | 65 | 76,1 | Rp 2 1/2" | 160 | 14 | 32 | 100 | 110 | 130 | 3 | 14 | 4 | M12 | 2,17 | 1 |
| 418080006 | 80 | 88,9 | Rp 3" | 190 | 16 | 34 | 110 | 128 | 150 | 3 | 18 | 4 | M16 | 3,2 | 1 |
| 418100006 | 100 | 114,3 | Rp 4" | 210 | 16 | 40 | 130 | 148 | 170 | 3 | 18 | 4 | M16 | 3,59 | 1 |



419

FLANGIA FILETTATA

- THREADED FLANGES
- GEWINDEFLANSCH
- BRIDE FILETÉ
- BRIDA ROSCADA

MATERIAL: P250GH / C22.8

NORM: EN 1092-1-13 tipo/type "B1"

PN 10/16

| CODE | PN | Pipe | | Flange | | | | | | | | | Bolts | | kg | kg |
|-----------|---------------|------|-------|---------------|------|-------|-------|-------|-------|------|-------|------|-------|------|-----|----|
| | | DN | A mm | Thr. ϕ i | D mm | C2 mm | H1 mm | N2 mm | d1 mm | K mm | f1 mm | L mm | N° | Thr. | | |
| 419015010 | PN10=16=25=40 | 15 | 21,3 | Rp 1/2" | 95 | 16 | 22 | 35 | 45 | 65 | 2 | 14 | 4 | M12 | 0,5 | 1 |
| 419020010 | | 20 | 26,9 | Rp 3/4" | 105 | 18 | 26 | 45 | 58 | 75 | 2 | 14 | 4 | M12 | 1 | 1 |
| 419025010 | | 25 | 33,7 | Rp 1" | 115 | 18 | 28 | 52 | 68 | 85 | 2 | 14 | 4 | M12 | 1,5 | 1 |
| 419032010 | | 32 | 42,4 | Rp 1 1/4" | 140 | 18 | 30 | 60 | 78 | 100 | 2 | 18 | 4 | M16 | 2 | 1 |
| 419040010 | | 40 | 48,3 | Rp 1 1/2" | 150 | 18 | 32 | 70 | 88 | 110 | 4 | 18 | 4 | M16 | 2,1 | 1 |
| 419050010 | PN10=16 | 50 | 60,3 | Rp 2" | 165 | 18 | 28 | 84 | 102 | 125 | 4 | 18 | 4 | M16 | 2,5 | 1 |
| 419065010 | | 65 | 76,1 | Rp 2 1/2" | 185 | 18 | 32 | 104 | 122 | 145 | 4 | 18 | 8 | M16 | 3 | 1 |
| 419080016 | | 80 | 88,9 | Rp 3" | 200 | 20 | 34 | 118 | 138 | 160 | 4 | 18 | 8 | M16 | 4 | 1 |
| 419100010 | | 100 | 114,3 | Rp 4" | 220 | 20 | 40 | 140 | 158 | 180 | 4 | 18 | 8 | M16 | 4,5 | 1 |
| 419125010 | | 125 | 139,7 | Rp 5" | 250 | 22 | 44 | 168 | 188 | 210 | 4 | 18 | 8 | M16 | 6,5 | 1 |
| 419150010 | | 150 | 168,3 | Rp 6" | 285 | 22 | 44 | 195 | 212 | 240 | 4 | 22 | 8 | M20 | 7,5 | 1 |