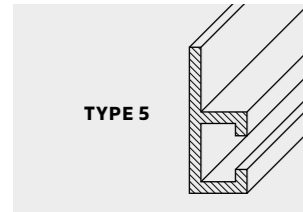
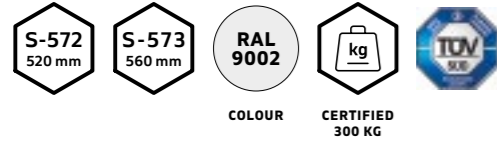


HEAVY DUTY



Staffe industriali relizzate in lamiera zincata e verniciate con polveri poliesteri.

VANTAGGI

Realizzate per sostenere le macchine più pesanti. Portate elevate garantite.

[EN]

Heavy-duty wall brackets made of galvanized steel, varnish finished with polyester powder.

ADVANTAGES

Made to hold heavy-duty units. High load capacities guaranteed.

[FR]

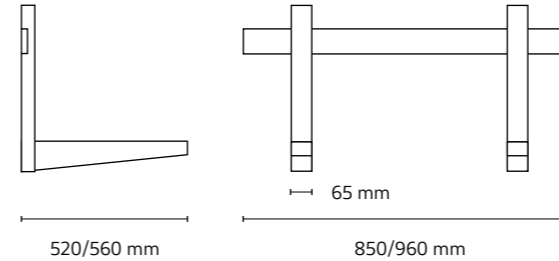
Supports muraux lourds réalisés en acier zingué et peints à la poudre polyester.

AVANTAGES

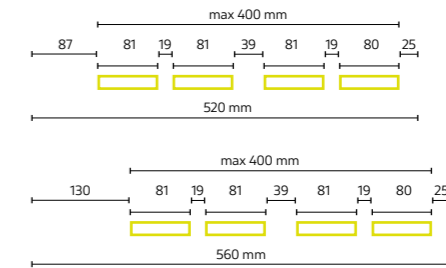
Etudiés pour supporter les machines les plus lourdes. Charges élevées garanties.



HEAVY DUTY



INTERASSI DRILLING DIAGRAM / ENTRAXES



300 KG DOMESTIC USE

TESTATA 900 KG / TESTED 900 KG / TESTÉ 900 KG

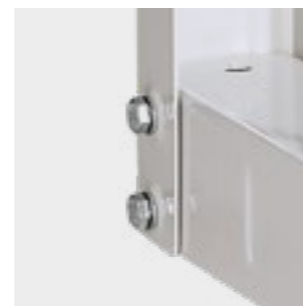
S-573-1	✓	P560xH400xL960 mm	70 set	P110xH75xL1025 mm

PLUS



65 mm

M8 8.8



FORNITE CON

SUPPLIED WITH / FOURNIS AVEC

